

# Urban Terracing

## Land Banking Strategy for a Sustainable Community Urban Agriculture

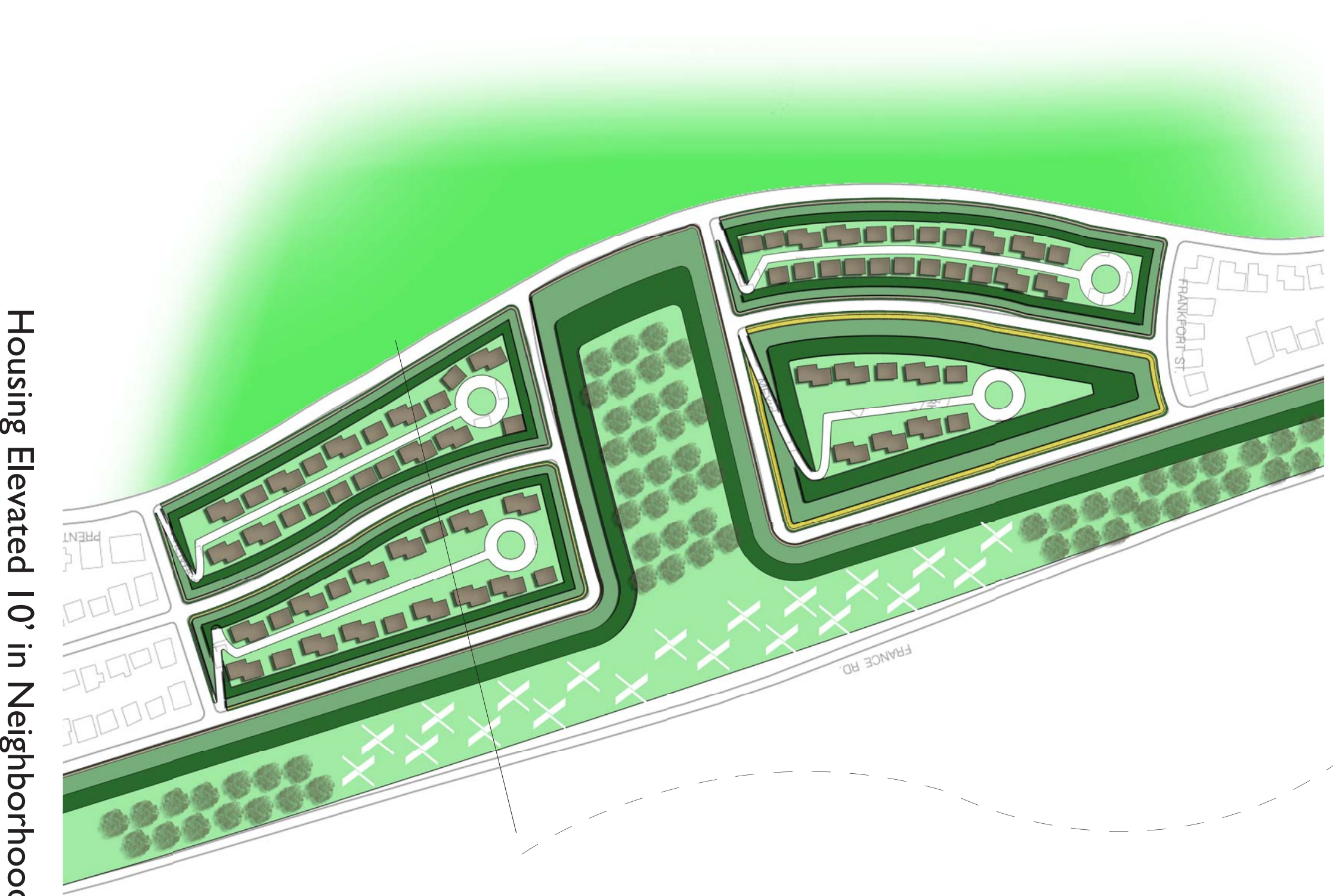
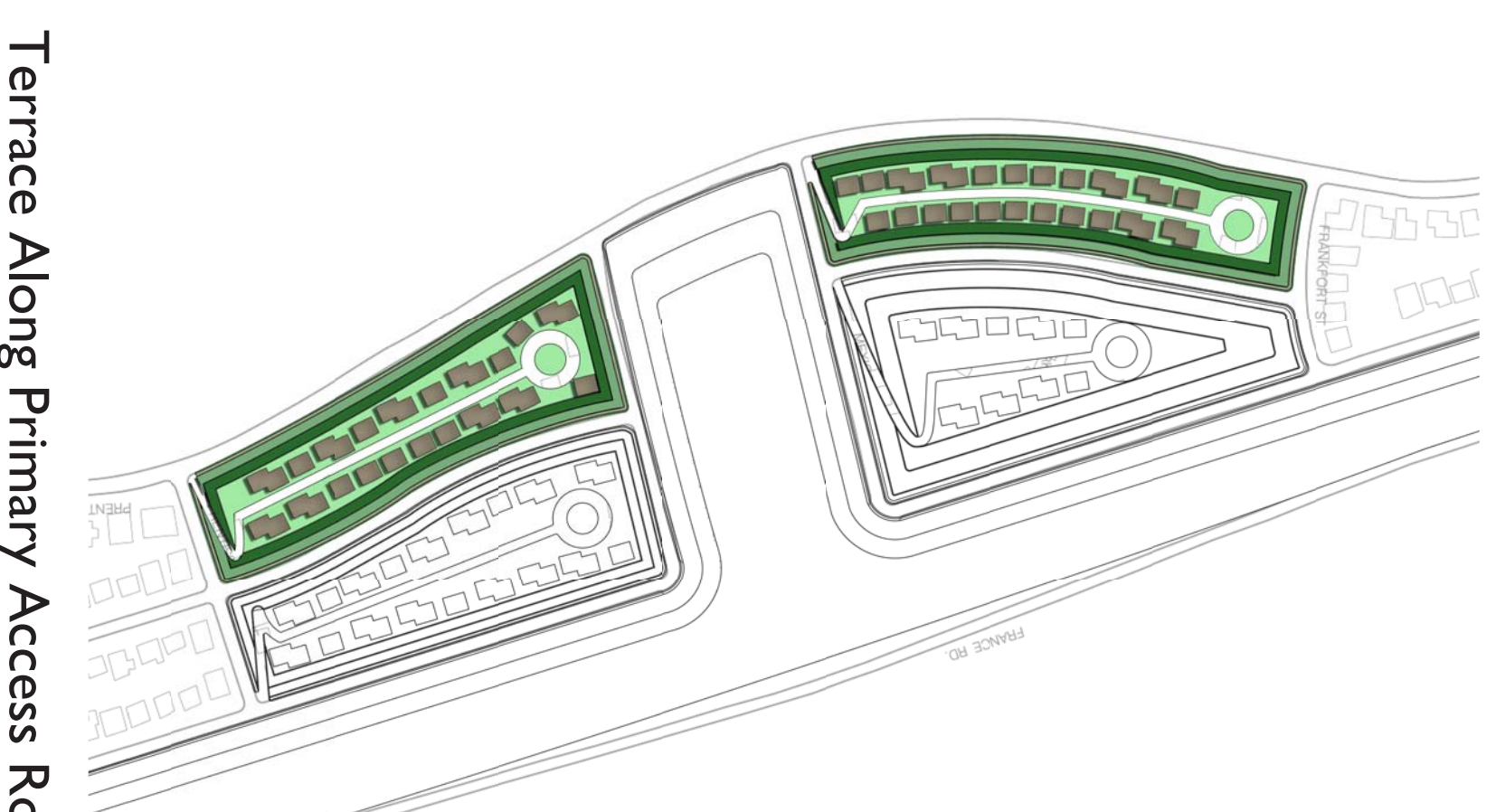
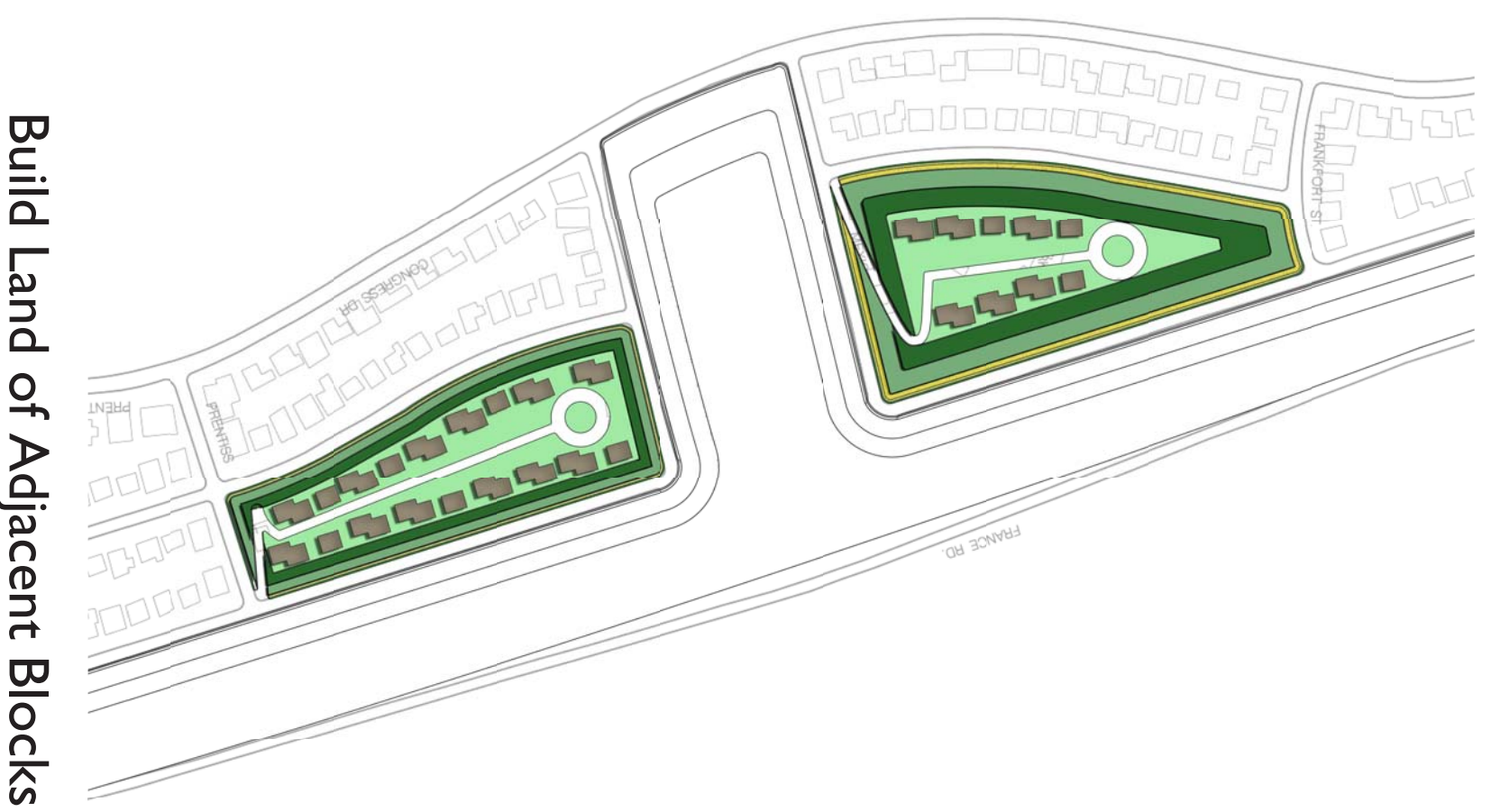
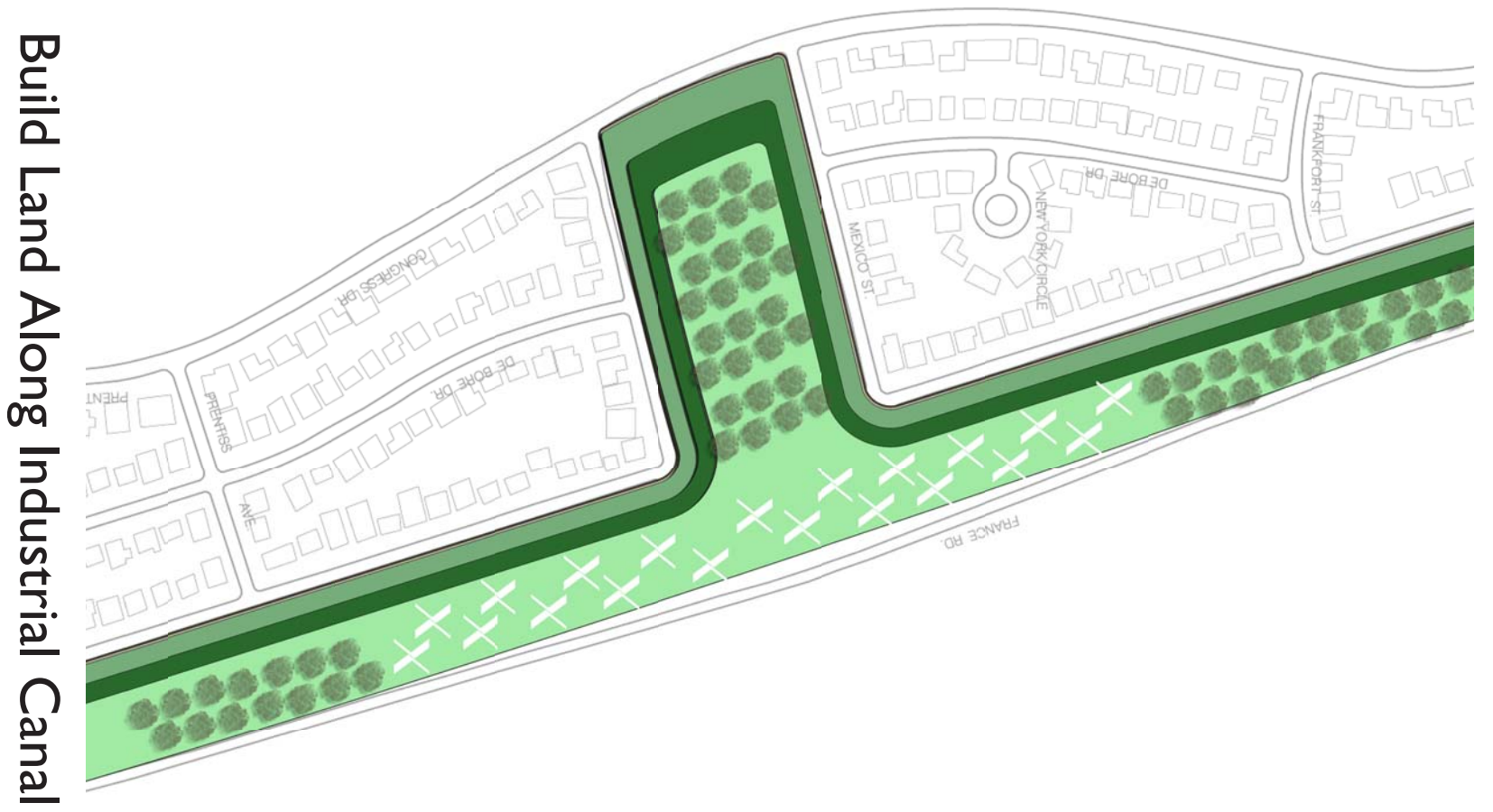
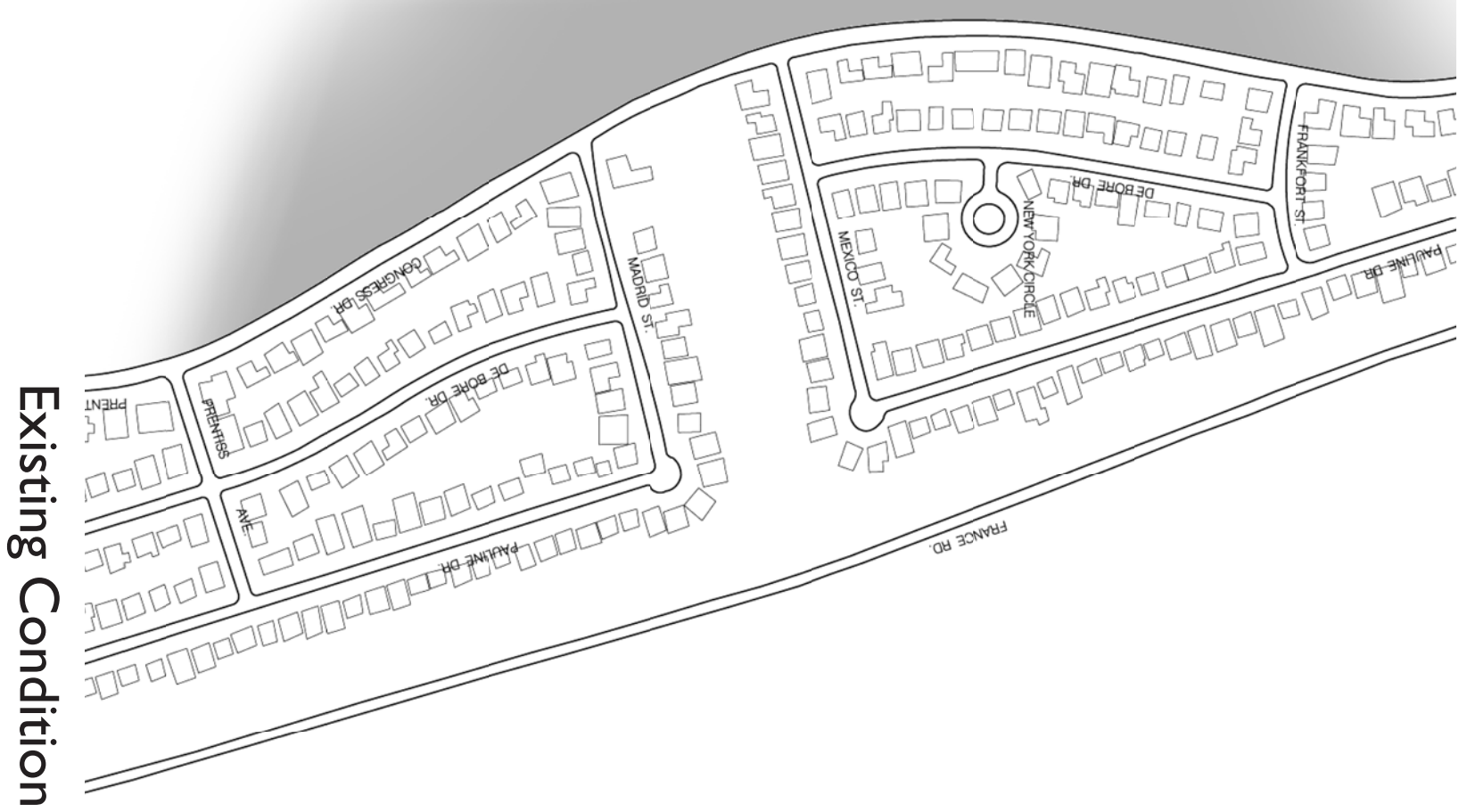
Abandoned homes and abundance of poorly used networks of open space in the aftermath of Hurricane Katrina pose serious threats to safety and health in underserved neighborhoods. This strategy applies the concepts of productive landscapes and land banking as ways of ensuring the economic and social sustainability of Pontilly. Using Bonnie Carrie Spillway alluvium each block would incrementally be built up ten feet. This would assure the safety of homes in the case of another levy failure. The terracing allows for the cultivation of agricultural products to foster healthy lifestyles of the residents of Pontilly, as well as provide an economic engine for re-population of the neighborhood. The unique physical form of the neighborhood would allow for new concepts of shared open space to emerge, nourishing a renewed sense of community.

phase 3

phase 2

phase 1

### Prototype: Morrison Park Area



## Pontilly Neighborhood Design Workshop

Design Development

Louisiana State University

School of Landscape Architecture

October 2007